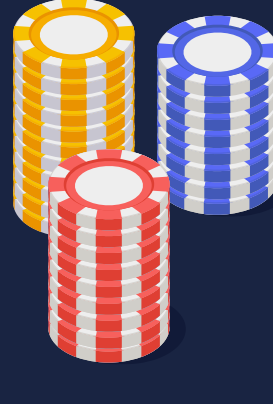




Stay Ahead of the Game with Compliance Technology

Why Does Compliance Matter?

You don't want to be fined or even lose your license because of illicit activity. Without the right tools in place, you may be vulnerable. Compliance software empowers your operation by tying into data sources.



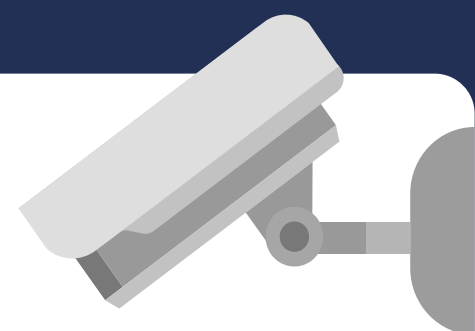
Money launderers use **many strategies** to take advantage of casinos.



Casinos see thousands of players come through their doors each day, which is tremendous for business. However, venues like yours could pay the price if they fail to ensure regulatory compliance.

Do More with Surveillance Technology

AI-powered surveillance gives your casino the most accurate insights to inform decisions, so you can stay ahead and avoid penalties. Get next-level, best-in-class tools to discover compliance issues quickly and efficiently.



Identity Management

ID scanners ensure that patron IDs are legitimate, so patrons don't register using false credentials. If the same people are regularly performing suspicious activities, they can be easily flagged for enhanced scrutiny.



TITO/AML Monitoring

The full Compliance Suite integrates with ticket in ticket out (TITO) systems, making activities fully traceable. Unlike current TITO systems that only report on people whose transactions are above the \$10,000 threshold, advanced anti-money laundering (AML) monitoring catches smaller transactions meant to evade reporting with the individual making them. Thanks to facial recognition, regardless of value, transactions can be associated with patrons to uncover patterns of suspicious activity.



How Can eConnect's Compliance Suite Help?

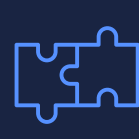
Stay ahead of compliance risks by powering up your surveillance technology and compliance operation. Connect your casino management system to next-level AI-driven analytics to do more.



Employee Productivity

With the Compliance Suite, employees can be 10x more productive at identifying, locating, and tracking suspicious individuals, allowing staff to focus on vital tasks. Monetary aggregation and facial fingerprinting link patrons with cash, saving hundreds of man-hours of tedious video reviews.

Employees can be
10x more productive



System Integration

The Compliance Suite connects to existing casino management systems. **eConnect is currently the leader in integrating casino data with surveillance video and camera systems** and is connected to more than 300,000 cameras throughout the gaming industry.



Advanced Recognition

With high levels of foot traffic, you need to quickly distinguish between patrons. The Compliance Suite helps casinos **recognize and report patrons who are not complying with Title 31.**



Schedule a demo today to experience the power of the Compliance Suite for yourself.

[Request a Demo](#)